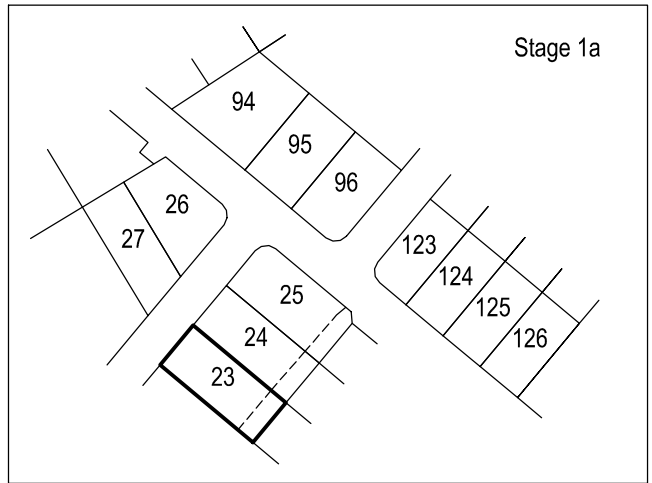
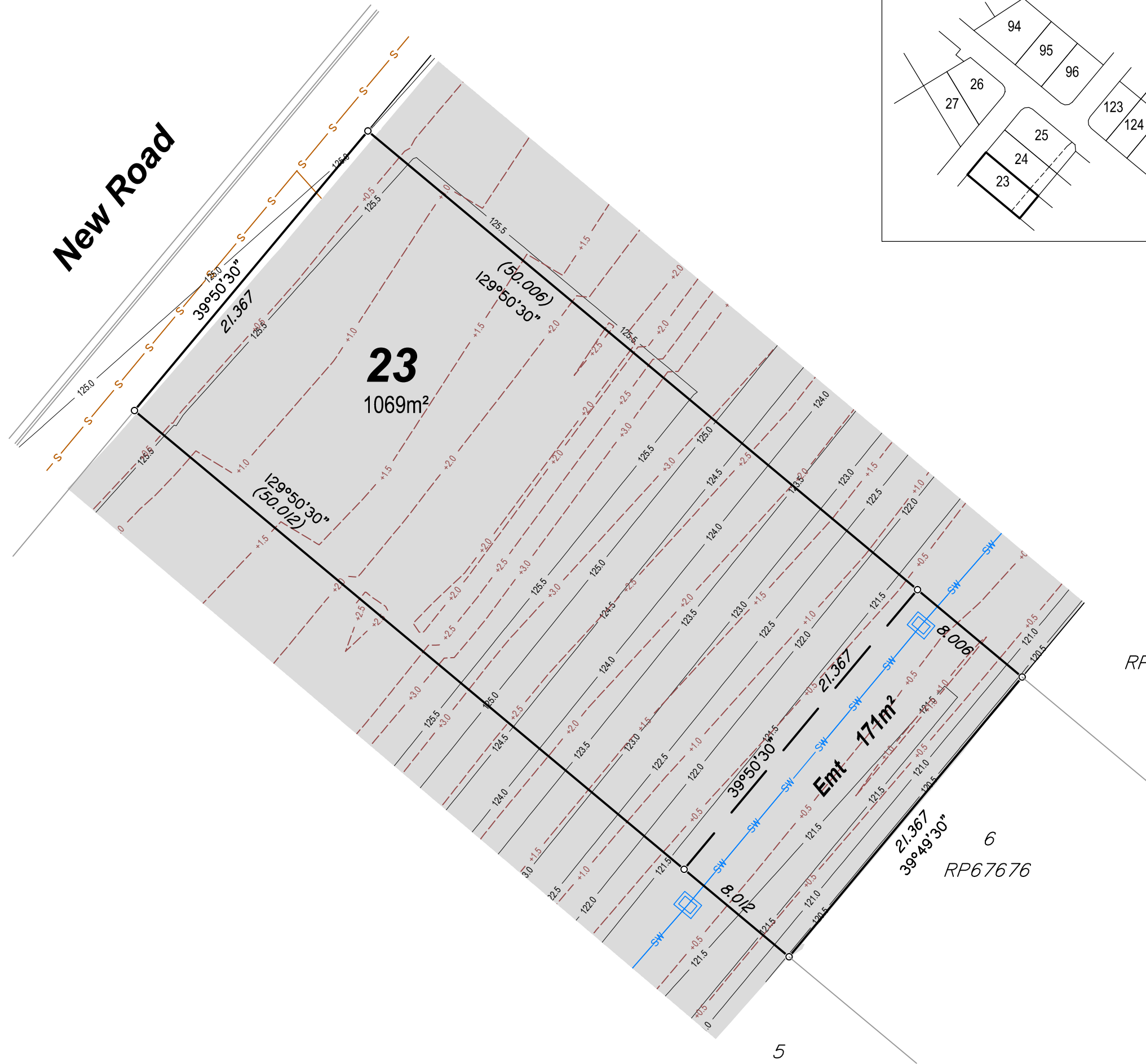


New Road



Stage 1a

Scenic Rise ARATULA

PLAN FOR PROPOSED LOT 23

Proposed Lot **23** is currently described as part of Lot 10 on SP181081 and situated at Aratula.

The Reconfiguration of a Lot application for the proposed lot was approved on the _____ on plan 04-1571-101 rev C dated 25/10/2022.

Legend:

- -1.0 --- Design Fill Depth Contour (0.1m Interval)
- -2.0 --- Design Surface Level Contour (0.25m Interval)
- Area of Design Fill
- SW --- Design Drainage Infrastructure
- S --- Design Sewer Infrastructure

Builders Note:

Builders shall not build off the design levels shown. A site survey is required. This note is an integral part of this plan.

Engineering Note :

Engineering design information supplied by Mortons Urban Solutions Consulting Engineers, April 2022

- All design information is subject Operations Works Approval which has not been issued for the works at the time of preparation of this plan

Compaction Statement :

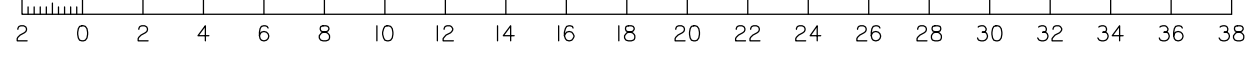
The earthworks must be carried out in accordance with AS 3798-2007 *Guidelines on earthworks for commercial and residential developments*. Supervision of bulk earthworks must be to Level 1 and the frequency of field density testing must be in accordance with Table 8.1 of AS 3798-2007.

IMPORTANT NOTE PRELIMINARY ISSUE
 Note this plan is preliminary information of the proposed development works prior to the issue of all required Development Approvals by relevant authorities.
 This plan does not meet the requirements of a disclosure plan under the land sales act and and is unsuitable for use in any sales contract. In particular, no relevance should be placed on the information on this plan for any financial dealings involving the land.

LOCALITY ARATULA	MAP REFERENCE 9442-33321
HEIGHT DATUM AHD D	LOCAL AUTHORITY SCENIC RIM REGIONAL COUNCIL
HEIGHT ORIGIN OPM162895	SCALE 1:250 (A3)
MERIDIAN MGA	SURVEYOR CH 25/04/2022
CONTOUR INTERVAL SEE NOTE	DRAWN RP 25/04/2022

PLAN NUMBER 1571-DIS-23	REVISION A
-----------------------------------	----------------------

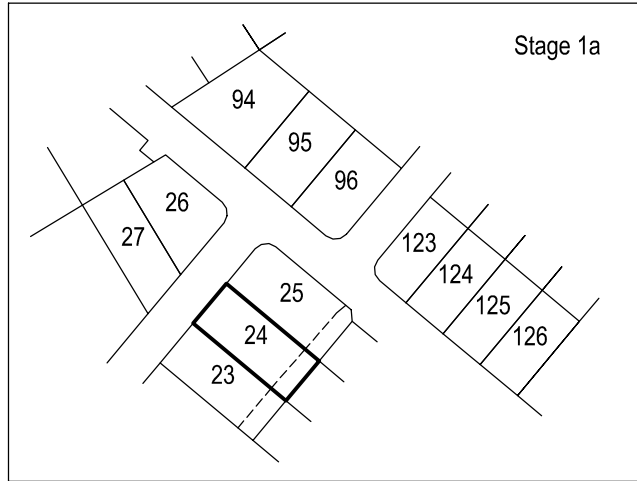
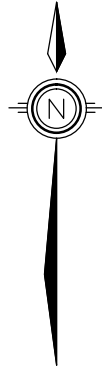
Scale 1: 250 – Lengths are in Metres.



7
RP67676

6
RP67676

5
RP67676



Scenic Rise ARATULA

PLAN FOR PROPOSED LOT 24

Proposed Lot **24** is currently described as part of Lot 10 on SP181081 and situated at Aratula.

The Reconfiguration of a Lot application for the proposed lot was approved on the _____ on plan 04-1571-101 rev C dated 25/10/2022.

Legend:

- -1.0 --- Design Fill Depth Contour (0.1m Interval)
- -2.0 --- Design Surface Level Contour (0.25m Interval)
- Area of Design Fill
- SW --- Design Drainage Infrastructure
- S --- Design Sewer Infrastructure

Builders Note:

Builders shall not build off the design levels shown. A site survey is required. This note is an integral part of this plan.

Engineering Note :

Engineering design information supplied by Mortons Urban Solutions Consulting Engineers, April 2022

- All design information is subject Operations Works Approval which has not been issued for the works at the time of preparation of this plan

Compaction Statement :

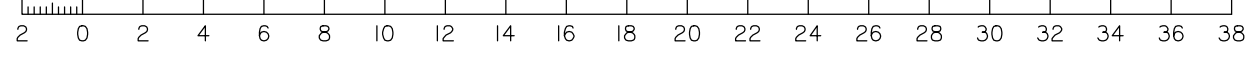
The earthworks must be carried out in accordance with AS 3798-2007 *Guidelines on earthworks for commercial and residential developments*. Supervision of bulk earthworks must be to Level 1 and the frequency of field density testing must be in accordance with Table 8.1 of AS 3798-2007.

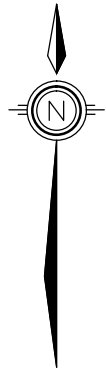
IMPORTANT NOTE PRELIMINARY ISSUE
 Note this plan is preliminary information of the proposed development works prior to the issue of all required Development Approvals by relevant authorities.
 This plan does not meet the requirements of a disclosure plan under the land sales act and and is unsuitable for use in any sales contract. In particular, no relevance should be placed on the information on this plan for any financial dealings involving the land.

LOCALITY ARATULA	MAP REFERENCE 9442-33321
HEIGHT DATUM AHD D	LOCAL AUTHORITY SCENIC RIM REGIONAL COUNCIL
HEIGHT ORIGIN OPM162895	SCALE 1:250 (A3)
MERIDIAN MGA	SURVEYOR CH 25/04/2022
CONTOUR INTERVAL SEE NOTE	DRAWN RP 25/04/2022

PLAN NUMBER 1571-DIS-24	REVISION A
-----------------------------------	----------------------

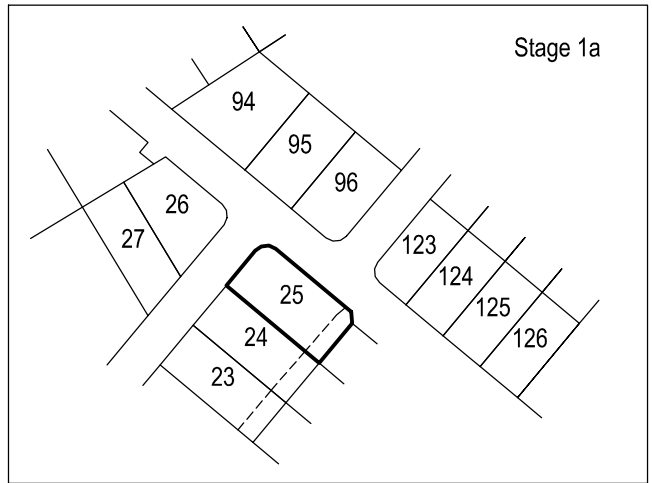
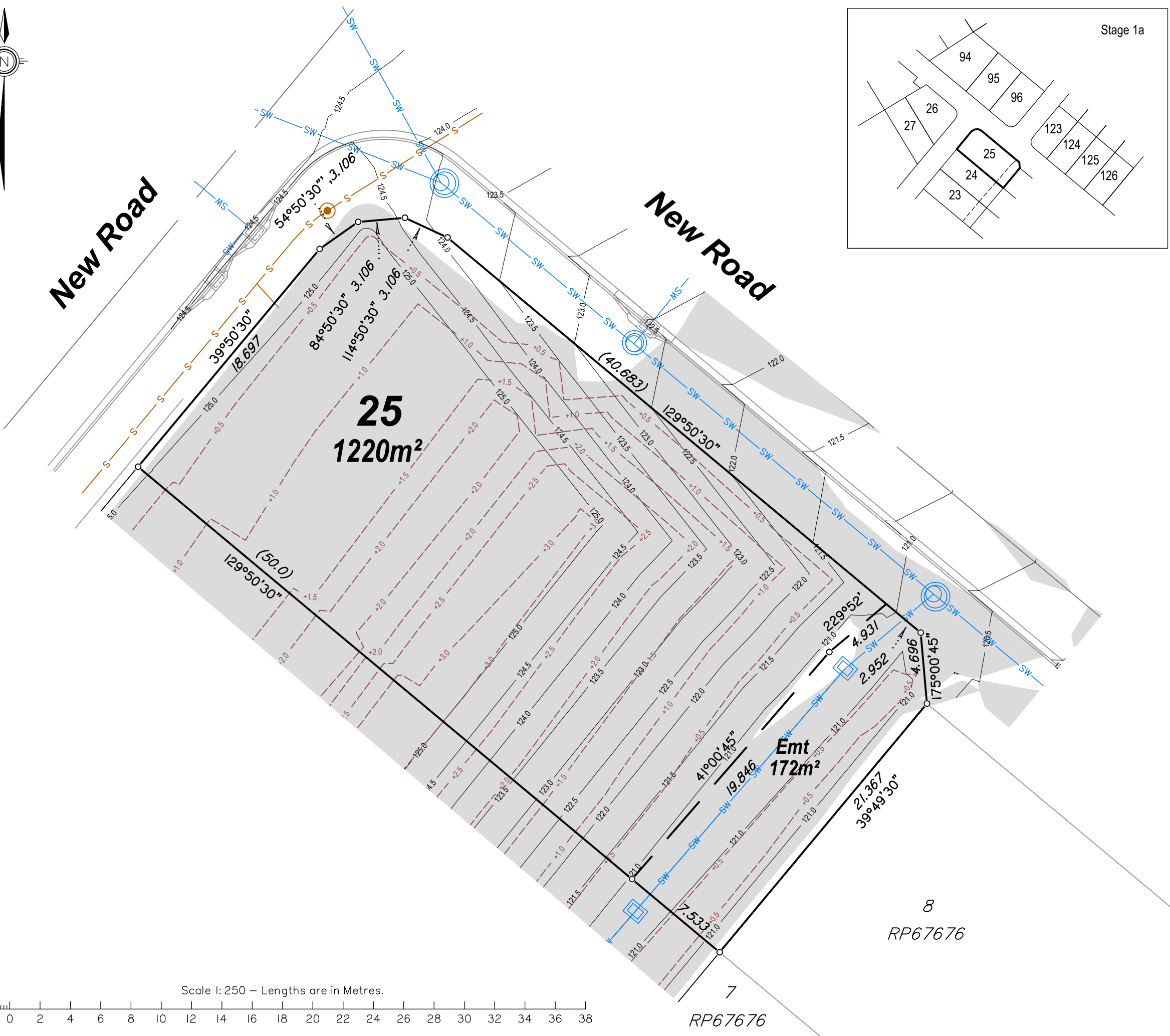
Scale 1: 250 – Lengths are in Metres.





New Road

New Road



Scenic Rise ARATULA

PLAN FOR PROPOSED LOT 25

Proposed Lot **25** is currently described as part of Lot 10 on SP181081 and situated at Aratula.

The Reconfiguration of a Lot application for the proposed lot was approved on the _____ on plan 04-1571-101 rev C dated 25/10/2022.

Legend:

- -1.0 --- Design Fill Depth Contour (0.1m Interval)
- -2.0 --- Design Surface Level Contour (0.25m Interval)
- Area of Design Fill
- SW --- Design Drainage Infrastructure
- S --- Design Sewer Infrastructure

Builders Note:

Builders shall not build off the design levels shown. A site survey is required. This note is an integral part of this plan.

Engineering Note :

Engineering design information supplied by Mortons Urban Solutions Consulting Engineers, April 2022

- All design information is subject Operations Works Approval which has not been issued for the works at the time of preparation of this plan

Compaction Statement :

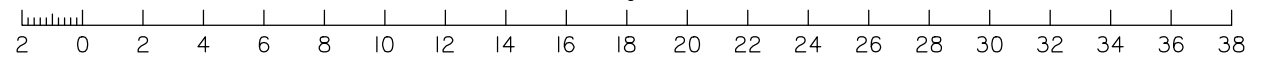
The earthworks must be carried out in accordance with AS 3798-2007 *Guidelines on earthworks for commercial and residential developments*. Supervision of bulk earthworks must be to Level 1 and the frequency of field density testing must be in accordance with Table 8.1 of AS 3798-2007.

IMPORTANT NOTE PRELIMINARY ISSUE
 Note this plan is preliminary information of the proposed development works prior to the issue of all required Development Approvals by relevant authorities.
 This plan does not meet the requirements of a disclosure plan under the land sales act and and is unsuitable for use in any sales contract. In particular, no relevance should be placed on the information on this plan for any financial dealings involving the land.

LOCALITY ARATULA	MAP REFERENCE 9442-33321
HEIGHT DATUM AHD D	LOCAL AUTHORITY SCENIC RIM REGIONAL COUNCIL
HEIGHT ORIGIN OPM162895	SCALE 1:250 (A3)
MERIDIAN MGA	SURVEYOR CH 25/04/2022
CONTOUR INTERVAL SEE NOTE	DRAWN RP 25/04/2022

PLAN NUMBER 1571-DIS-25	REVISION A
-----------------------------------	----------------------

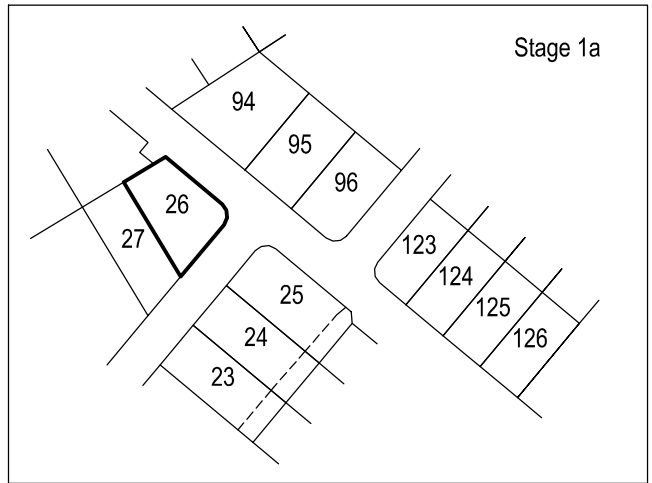
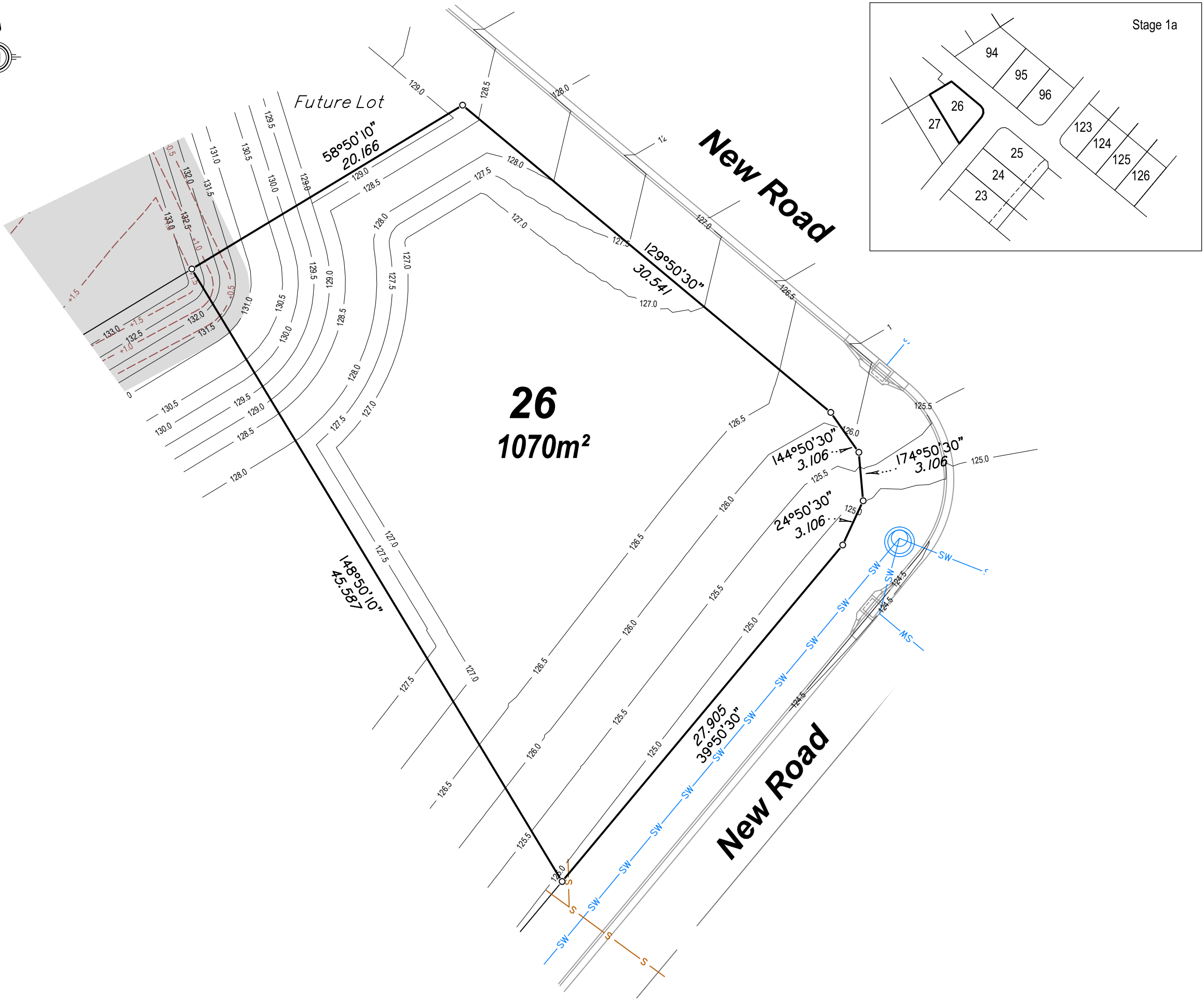
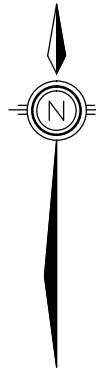
Scale 1: 250 – Lengths are in Metres.



7
RP67676

8
RP67676

Emt
172m²



Scenic Rise ARATULA

PLAN FOR PROPOSED LOT 26

Proposed Lot **26** is currently described as part of Lot 10 on SP181081 and situated at Aratula.

The Reconfiguration of a Lot application for the proposed lot was approved on the _____ on plan 04-1571-101 rev C dated 25/10/2022.

Legend:

- 1.0 --- Design Fill Depth Contour (0.1m Interval)
- 2.0 --- Design Surface Level Contour (0.25m Interval)
- Area of Design Fill
- SW --- Design Drainage Infrastructure
- S --- Design Sewer Infrastructure

Builders Note:

Builders shall not build off the design levels shown. A site survey is required. This note is an integral part of this plan.

Engineering Note :

Engineering design information supplied by Mortons Urban Solutions Consulting Engineers, April 2022

- All design information is subject Operations Works Approval which has not been issued for the works at the time of preparation of this plan

Compaction Statement :

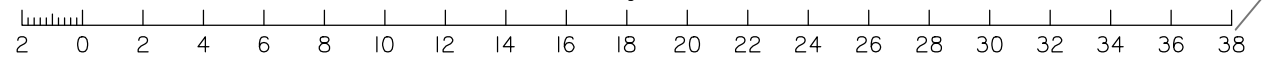
The earthworks must be carried out in accordance with AS 3798-2007 *Guidelines on earthworks for commercial and residential developments*. Supervision of bulk earthworks must be to Level 1 and the frequency of field density testing must be in accordance with Table 8.1 of AS 3798-2007.

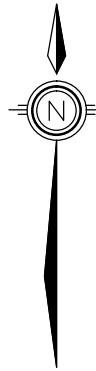
IMPORTANT NOTE PRELIMINARY ISSUE
 Note this plan is preliminary information of the proposed development works prior to the issue of all required Development Approvals by relevant authorities.
 This plan does not meet the requirements of a disclosure plan under the land sales act and and is unsuitable for use in any sales contract. In particular, no relevance should be placed on the information on this plan for any financial dealings involving the land.

LOCALITY ARATULA	MAP REFERENCE 9442-33321
HEIGHT DATUM AHD D	LOCAL AUTHORITY SCENIC RIM REGIONAL COUNCIL
HEIGHT ORIGIN OPM162895	SCALE 1:250 (A3)
MERIDIAN MGA	SURVEYOR CH 25/04/2022
CONTOUR INTERVAL SEE NOTE	DRAWN RP 25/04/2022

PLAN NUMBER 1571-DIS-26	REVISION A
-----------------------------------	----------------------

Scale 1: 250 – Lengths are in Metres.

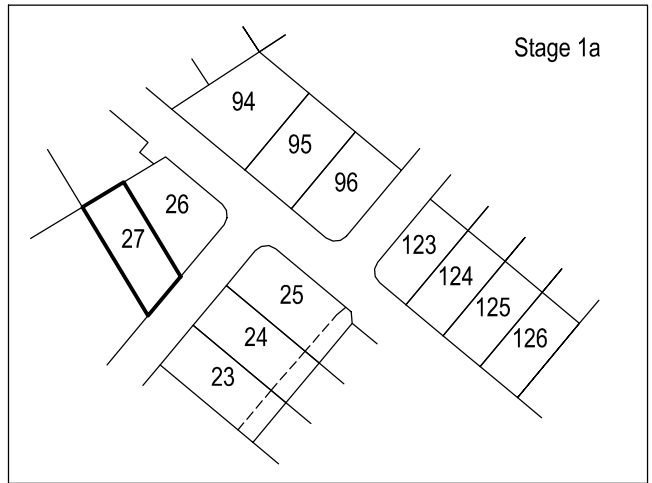
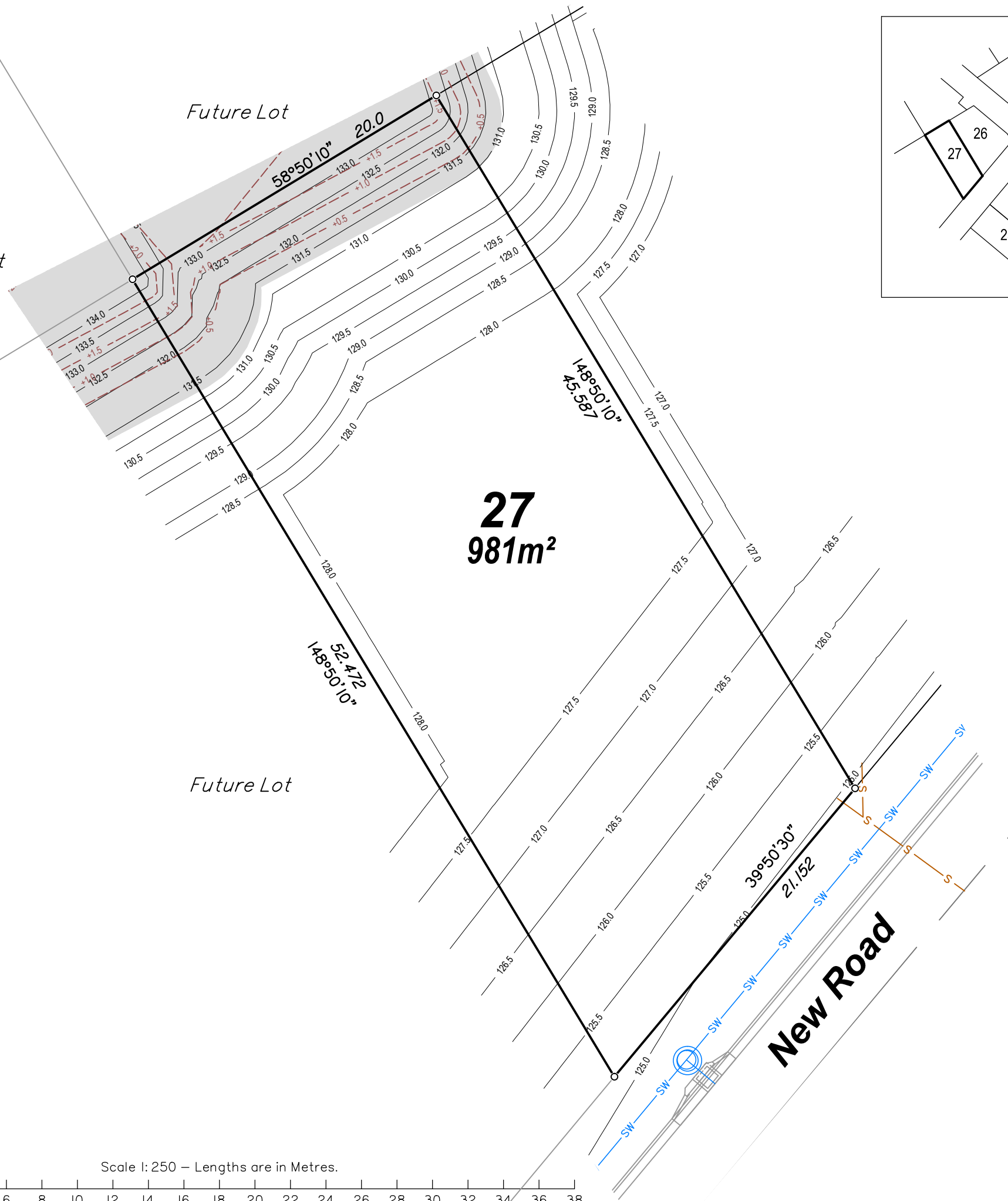




Future Lot

Future Lot

Future Lot



Stage 1a

Scenic Rise ARATULA

PLAN FOR PROPOSED LOT 27

Proposed Lot 27 is currently described as part of Lot 10 on SP181081 and situated at Aratula.

The Reconfiguration of a Lot application for the proposed lot was approved on the _____ on plan 04-1571-101 rev C dated 25/10/2022.

Legend:

- - - 1.0 - - - Design Fill Depth Contour (0.1m Interval)
- 2.0 — Design Surface Level Contour (0.25m Interval)
- Area of Design Fill
- SW — Design Drainage Infrastructure
- S — Design Sewer Infrastructure

Builders Note:

Builders shall not build off the design levels shown. A site survey is required. This note is an integral part of this plan.

Engineering Note :

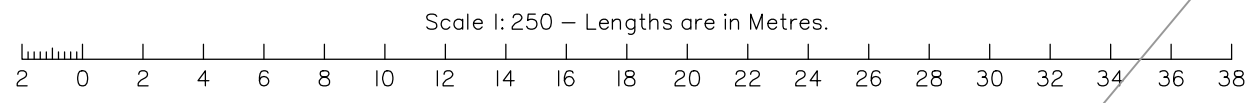
Engineering design information supplied by Mortons Urban Solutions Consulting Engineers, April 2022

- All design information is subject Operations Works Approval which has not been issued for the works at the time of preparation of this plan

Compaction Statement :

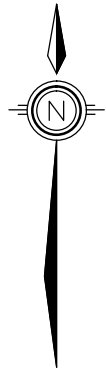
The earthworks must be carried out in accordance with AS 3798-2007 *Guidelines on earthworks for commercial and residential developments*. Supervision of bulk earthworks must be to Level 1 and the frequency of field density testing must be in accordance with Table 8.1 of AS 3798-2007.

IMPORTANT NOTE PRELIMINARY ISSUE
 Note this plan is preliminary information of the proposed development works prior to the issue of all required Development Approvals by relevant authorities.
 This plan does not meet the requirements of a disclosure plan under the land sales act and and is unsuitable for use in any sales contract. In particular, no relevance should be placed on the information on this plan for any financial dealings involving the land.



LOCALITY ARATULA	MAP REFERENCE 9442-33321
HEIGHT DATUM AHD D	LOCAL AUTHORITY SCENIC RIM REGIONAL COUNCIL
HEIGHT ORIGIN OPM162895	SCALE 1:250 (A3)
MERIDIAN MGA	SURVEYOR CH 25/04/2022
CONTOUR INTERVAL SEE NOTE	DRAWN RP 25/04/2022

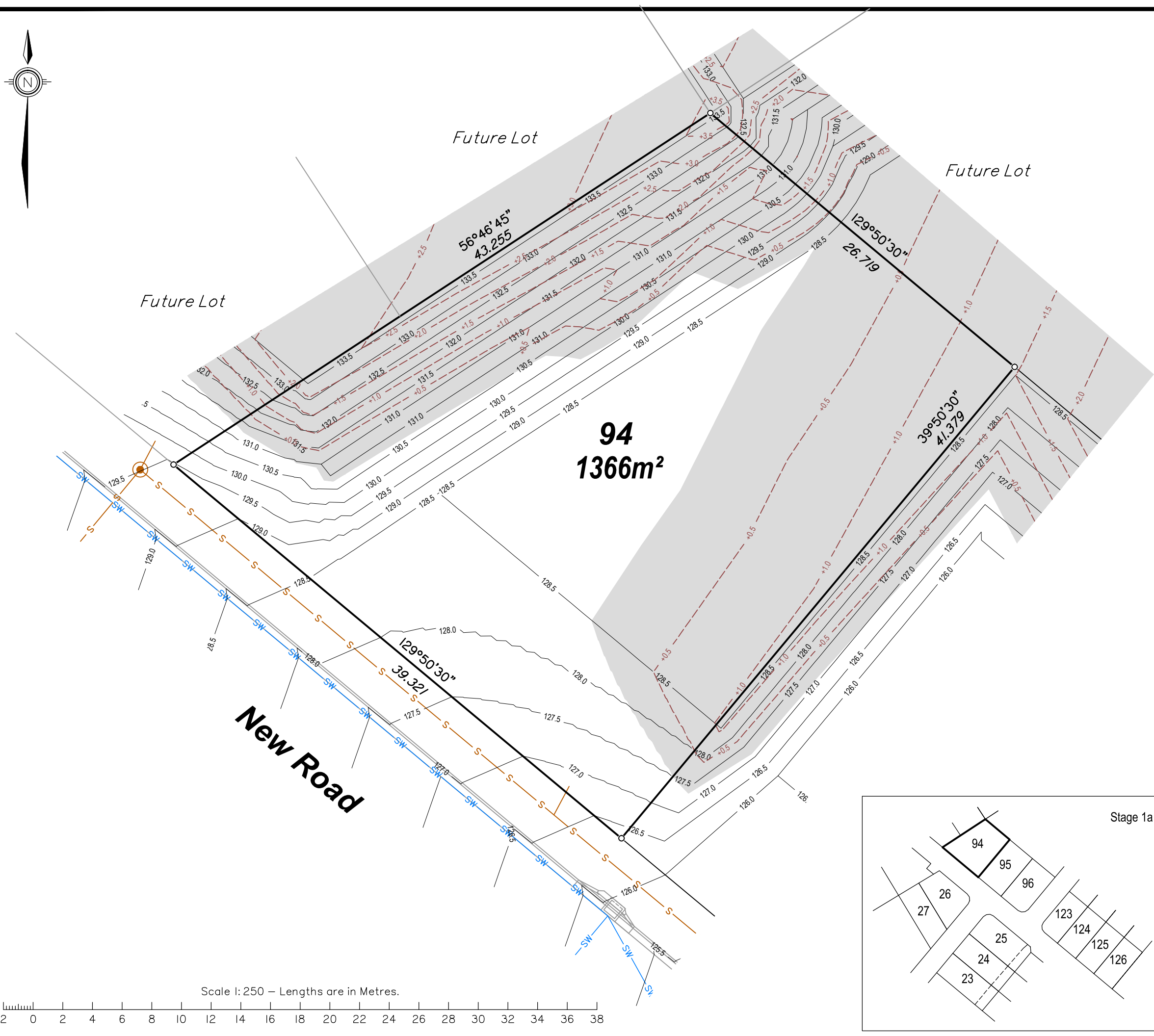
PLAN NUMBER 1571-DIS-27	REVISION A
-----------------------------------	----------------------



PLAN
FOR PROPOSED LOT 94

Proposed Lot **94** is currently described as part of Lot 10 on SP181081 and situated at Aratula.

The Reconfiguration of a Lot application for the proposed lot was approved on the _____ on plan 04-1571-101 rev C dated 25/10/2022.



Legend:

- 1.0 - Design Fill Depth Contour (0.1m Interval)
- 2.0 - Design Surface Level Contour (0.25m Interval)
- Area of Design Fill
- Design Drainage Infrastructure
- Design Sewer Infrastructure

Builders Note:

Builders shall not build off the design levels shown. A site survey is required. This note is an integral part of this plan.

Engineering Note :

Engineering design information supplied by Mortons Urban Solutions Consulting Engineers, April 2022

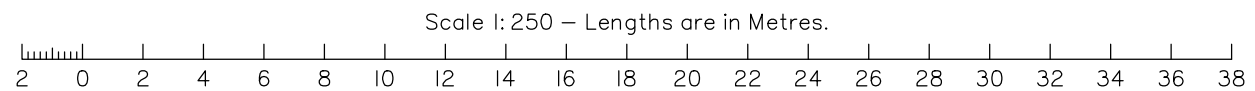
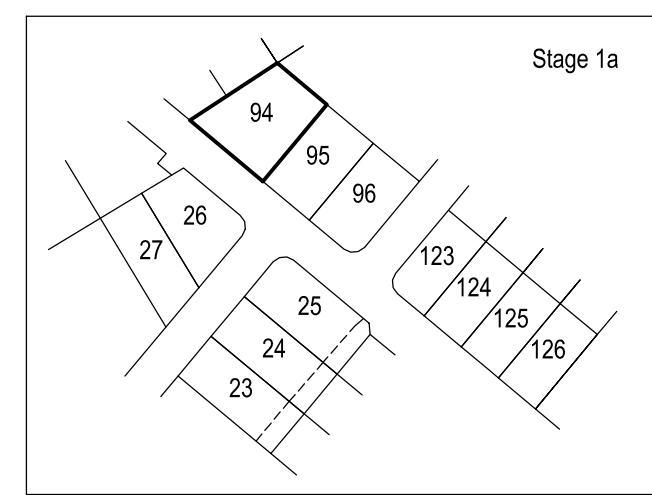
- All design information is subject Operations Works Approval which has not been issued for the works at the time of preparation of this plan

Compaction Statement :

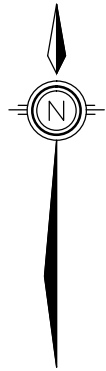
The earthworks must be carried out in accordance with AS 3798-2007 *Guidelines on earthworks for commercial and residential developments*. Supervision of bulk earthworks must be to Level 1 and the frequency of field density testing must be in accordance with Table 8.1 of AS 3798-2007.

IMPORTANT NOTE PRELIMINARY ISSUE

Note this plan is preliminary information of the proposed development works prior to the issue of all required Development Approvals by relevant authorities.
This plan does not meet the requirements of a disclosure plan under the land sales act and and is unsuitable for use in any sales contract. In particular, no reliance should be placed on the information on this plan for any financial dealings involving the land.



LOCALITY ARATULA	MAP REFERENCE 9442-33321
HEIGHT DATUM AHD D	LOCAL AUTHORITY SCENIC RIM REGIONAL COUNCIL
HEIGHT ORIGIN OPM162895	SCALE 1:250 (A3)
MERIDIAN MGA	SURVEYOR CH 25/04/2022
CONTOUR INTERVAL SEE NOTE	DRAWN RP 25/04/2022
PLAN NUMBER 1571-DIS-94	REVISION A




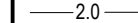
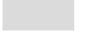


**PLAN
FOR PROPOSED LOT 95**

Proposed Lot **95** is currently described as part of Lot 10 on SP181081 and situated at Aratula.

The Reconfiguration of a Lot application for the proposed lot was approved on the _____ on plan 04-1571-101 rev C dated 25/10/2022.



Legend:

-  -1.0 - Design Fill Depth Contour (0.1m Interval)
-  -2.0 - Design Surface Level Contour (0.25m Interval)
-  Area of Design Fill
-  -sw - Design Drainage Infrastructure
-  -s - Design Sewer Infrastructure

Builders Note:

Builders shall not build off the design levels shown. A site survey is required. This note is an integral part of this plan.

Engineering Note :

Engineering design information supplied by Mortons Urban Solutions Consulting Engineers, April 2022

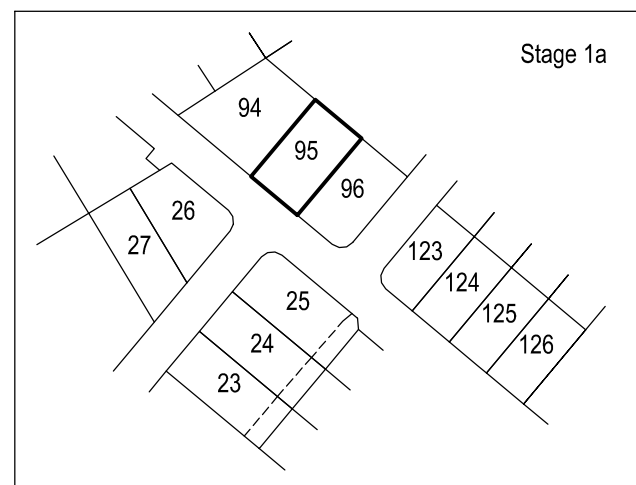
- All design information is subject Operations Works Approval which has not been issued for the works at the time of preparation of this plan

Compaction Statement :

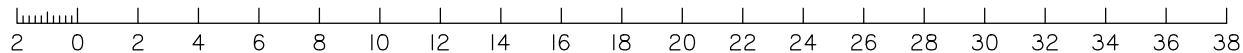
The earthworks must be carried out in accordance with AS 3798-2007 *Guidelines on earthworks for commercial and residential developments*. Supervision of bulk earthworks must be to Level 1 and the frequency of field density testing must be in accordance with Table 8.1 of AS 3798-2007.

IMPORTANT NOTE PRELIMINARY ISSUE

Note this plan is preliminary information of the proposed development works prior to the issue of all required Development Approvals by relevant authorities. This plan does not meet the requirements of a disclosure plan under the land sales act and and is unsuitable for use in any sales contract. In particular, no relevance should be placed on the information on this plan for any financial dealings involving the land.

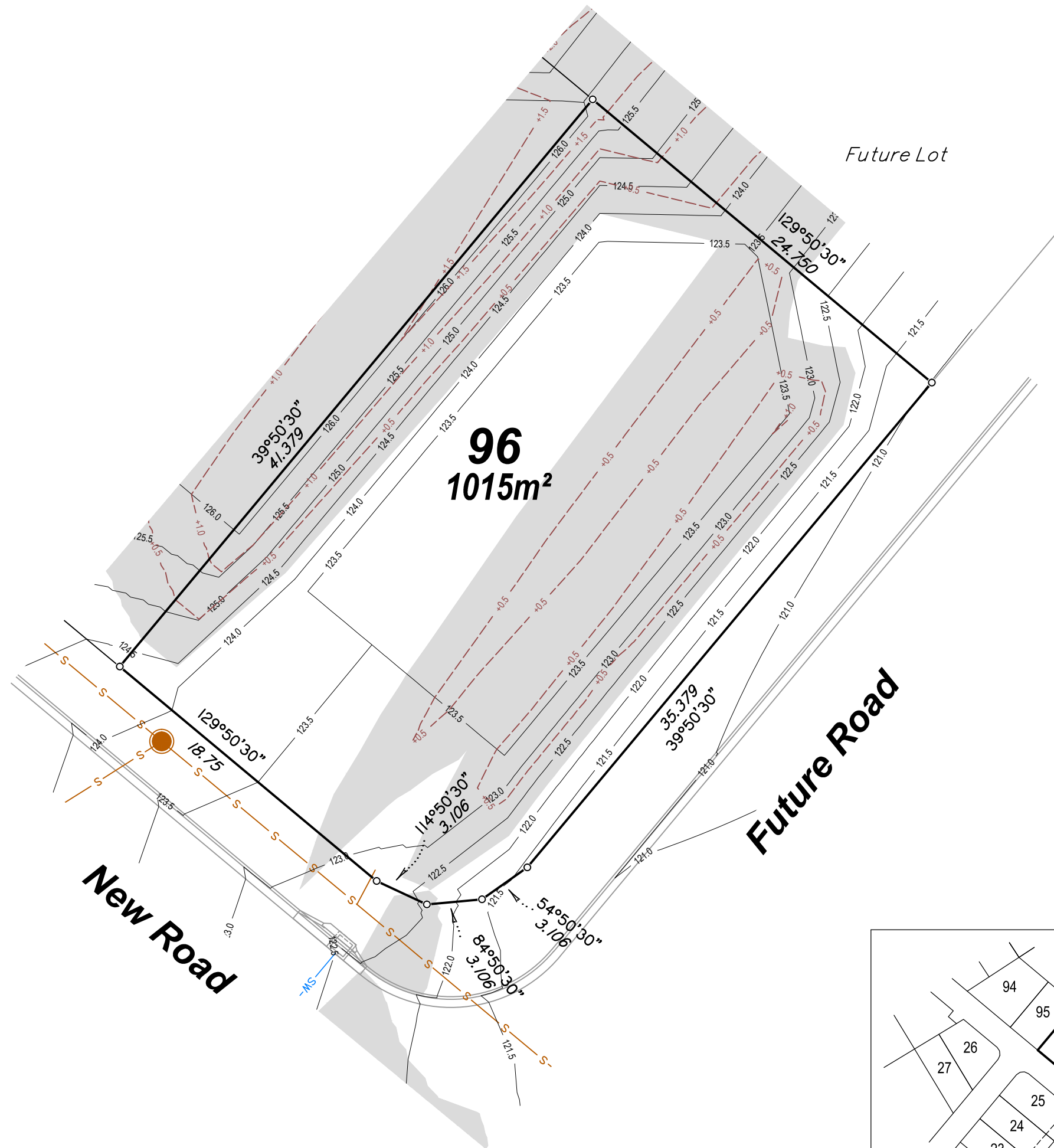
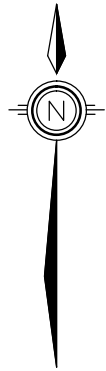


Scale 1: 250 – Lengths are in Metres.



LOCALITY ARATULA	MAP REFERENCE 9442-33321
HEIGHT DATUM AHD D	LOCAL AUTHORITY SCENIC RIM REGIONAL COUNCIL
HEIGHT ORIGIN OPM162895	SCALE 1:250 (A3)
MERIDIAN MGA	SURVEYOR CH 25/04/2022
CONTOUR INTERVAL SEE NOTE	DRAWN RP 25/04/2022

PLAN NUMBER 1571-DIS-95	REVISION A
-----------------------------------	----------------------

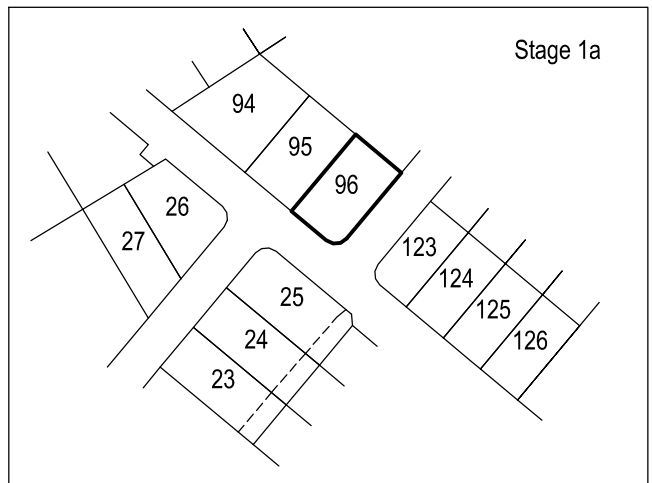
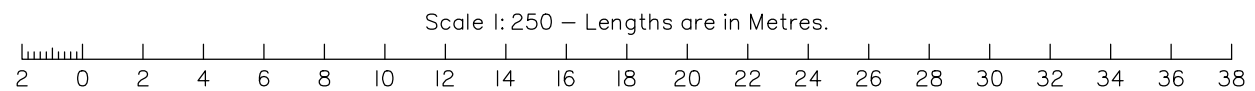


New Road

Future Road

Future Lot

96
1015m²



PLAN
FOR PROPOSED LOT 96

Proposed Lot **96** is currently described as part of Lot 10 on SP181081 and situated at Aratula.

The Reconfiguration of a Lot application for the proposed lot was approved on the _____ on plan 04-1571-101 rev C dated 25/10/2022.

Legend:

- 1.0 - Design Fill Depth Contour (0.1m Interval)
- 2.0 - Design Surface Level Contour (0.25m Interval)
- Area of Design Fill
- sw - Design Drainage Infrastructure
- s - Design Sewer Infrastructure

Builders Note:

Builders shall not build off the design levels shown. A site survey is required. This note is an integral part of this plan.

Engineering Note :

Engineering design information supplied by Mortons Urban Solutions Consulting Engineers, April 2022

- All design information is subject Operations Works Approval which has not been issued for the works at the time of preparation of this plan

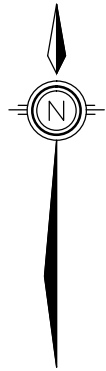
Compaction Statement :

The earthworks must be carried out in accordance with AS 3798-2007 *Guidelines on earthworks for commercial and residential developments*. Supervision of bulk earthworks must be to Level 1 and the frequency of field density testing must be in accordance with Table 8.1 of AS 3798-2007.

IMPORTANT NOTE PRELIMINARY ISSUE
Note this plan is preliminary information of the proposed development works prior to the issue of all required Development Approvals by relevant authorities.
This plan does not meet the requirements of a disclosure plan under the land sales act and and is unsuitable for use in any sales contract. In particular, no relevance should be placed on the information on this plan for any financial dealings involving the land.

LOCALITY ARATULA	MAP REFERENCE 9442-33321
HEIGHT DATUM AHD D	LOCAL AUTHORITY SCENIC RIM REGIONAL COUNCIL
HEIGHT ORIGIN OPM162895	SCALE 1:250 (A3)
MERIDIAN MGA	SURVEYOR CH 25/04/2022
CONTOUR INTERVAL SEE NOTE	DRAWN RP 25/04/2022

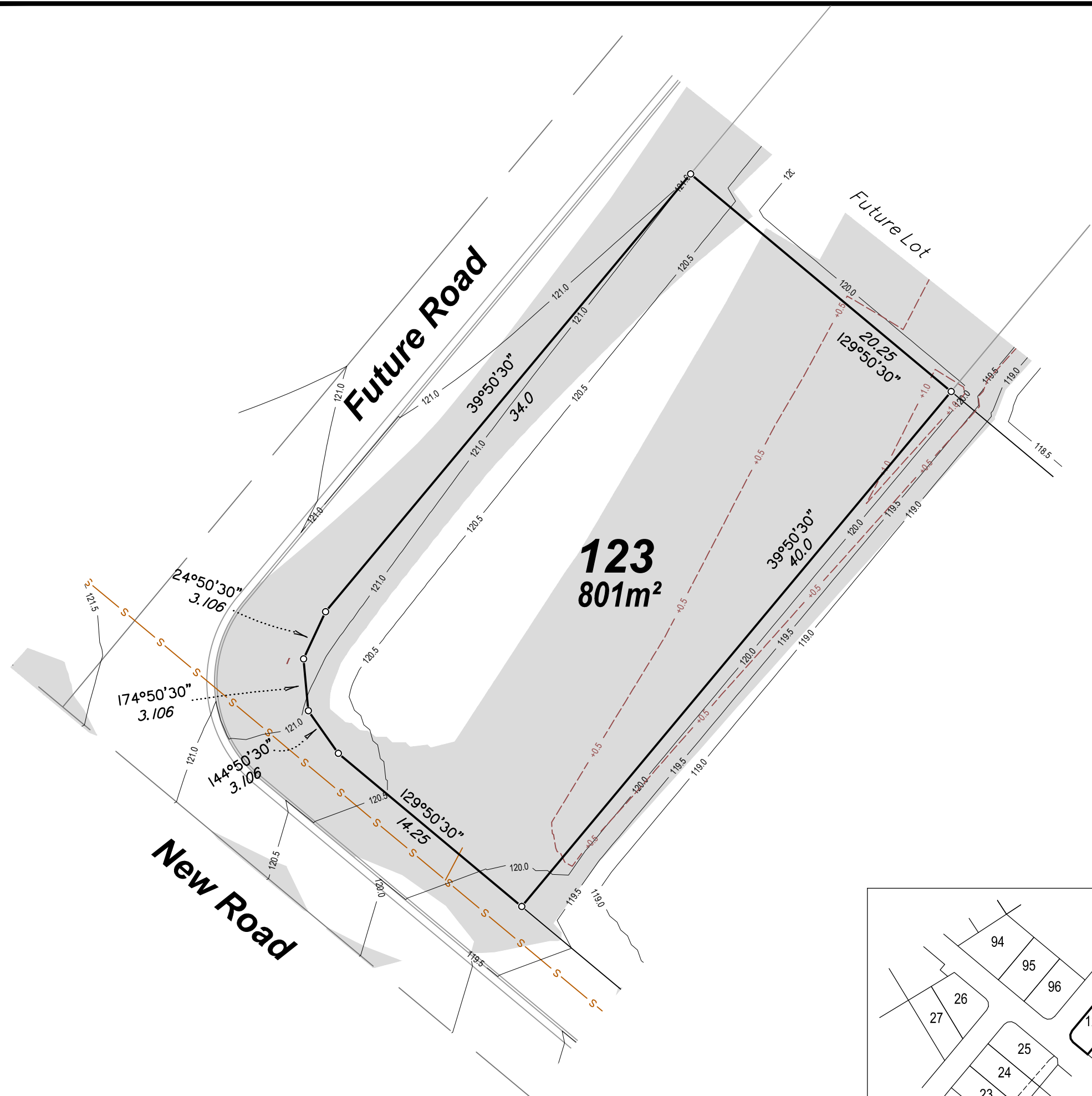
PLAN NUMBER 1571-DIS-96	REVISION A
-----------------------------------	----------------------





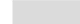


PLAN
FOR PROPOSED LOT 123

Proposed Lot **123** is currently described as part of Lot 10 on SP181081 and situated at Aratula.

The Reconfiguration of a Lot application for the proposed lot was approved on the _____ on plan 04-1571-101 rev C dated 25/10/2022.



Legend:

-  -1.0 - Design Fill Depth Contour (0.1m Interval)
-  -2.0 - Design Surface Level Contour (0.25m Interval)
-  Area of Design Fill
-  -sw- Design Drainage Infrastructure
-  -s- Design Sewer Infrastructure

Builders Note:

Builders shall not build off the design levels shown. A site survey is required. This note is an integral part of this plan.

Engineering Note :

Engineering design information supplied by Mortons Urban Solutions Consulting Engineers, April 2022

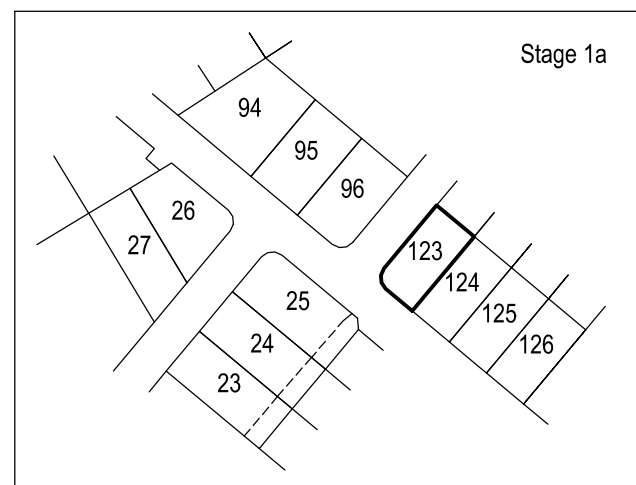
- All design information is subject Operations Works Approval which has not been issued for the works at the time of preparation of this plan

Compaction Statement :

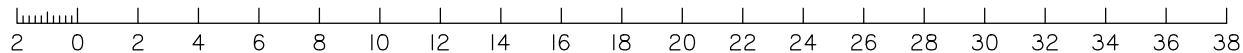
The earthworks must be carried out in accordance with AS 3798-2007 *Guidelines on earthworks for commercial and residential developments*. Supervision of bulk earthworks must be to Level 1 and the frequency of field density testing must be in accordance with Table 8.1 of AS 3798-2007.

IMPORTANT NOTE PRELIMINARY ISSUE

Note this plan is preliminary information of the proposed development works prior to the issue of all required Development Approvals by relevant authorities.
This plan does not meet the requirements of a disclosure plan under the land sales act and is unsuitable for use in any sales contract. In particular, no reliance should be placed on the information on this plan for any financial dealings involving the land.

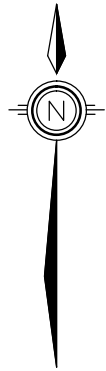


Scale 1: 250 – Lengths are in Metres.



LOCALITY ARATULA	MAP REFERENCE 9442-33321
HEIGHT DATUM AHD D	LOCAL AUTHORITY SCENIC RIM REGIONAL COUNCIL
HEIGHT ORIGIN OPM162895	SCALE 1:250 (A3)
MERIDIAN MGA	SURVEYOR CH 25/04/2022
CONTOUR INTERVAL SEE NOTE	DRAWN RP 25/04/2022

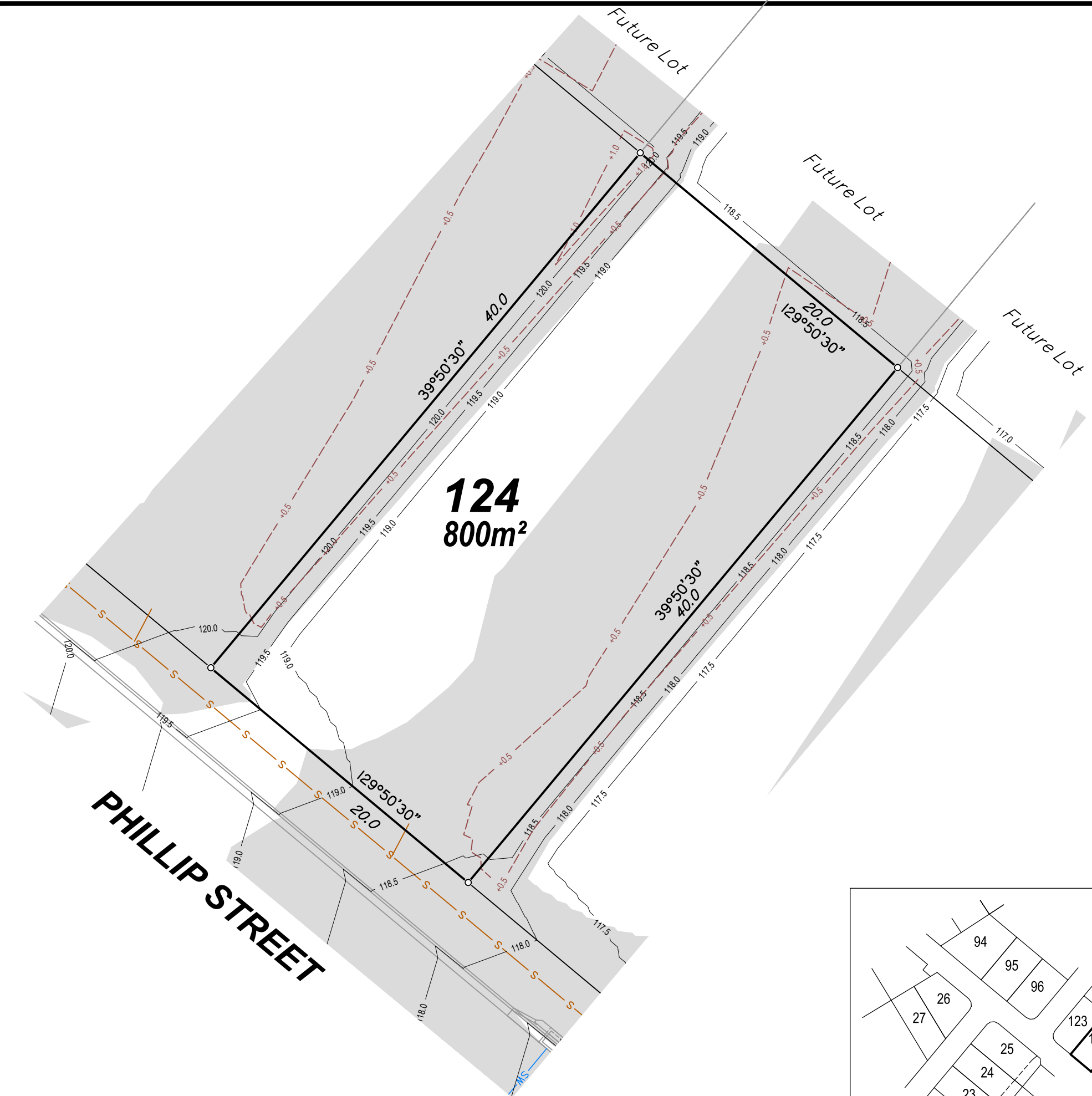
PLAN NUMBER 1571-DIS-123	REVISION A
------------------------------------	----------------------



**PLAN
FOR PROPOSED LOT 124**

Proposed Lot **124** is currently described as part of Lot 10 on SP181081 and situated at Aratula.






The Reconfiguration of a Lot application for the proposed lot was approved on the _____ on plan 04-1571-101 rev C dated 25/10/2022.



**124
800m²**

PHILLIP STREET

Legend:

-  -1.0- Design Fill Depth Contour (0.1m Interval)
-  -2.0- Design Surface Level Contour (0.25m Interval)
-  Area of Design Fill
-  -sw- Design Drainage Infrastructure
-  -s- Design Sewer Infrastructure

Builders Note:

Builders shall not build off the design levels shown. A site survey is required. This note is an integral part of this plan.

Engineering Note :

Engineering design information supplied by Mortons Urban Solutions Consulting Engineers, April 2022

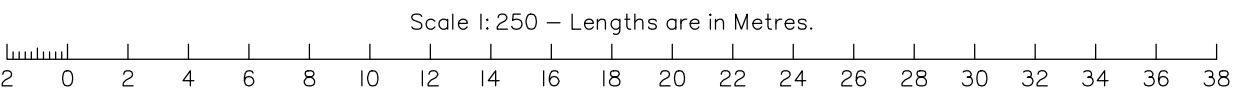
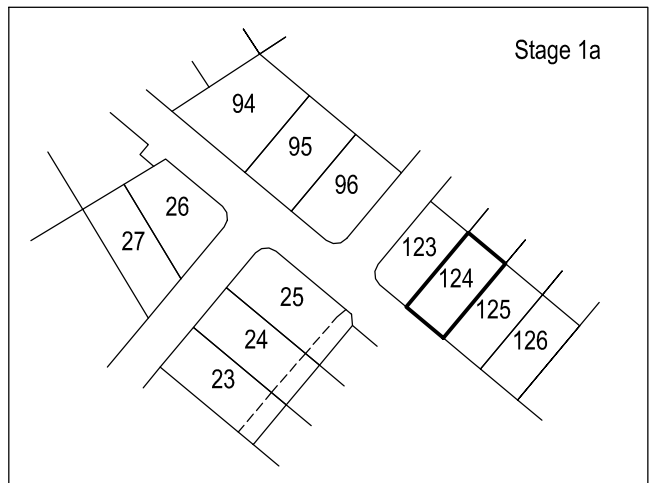
- All design information is subject Operations Works Approval which has not been issued for the works at the time of preparation of this plan

Compaction Statement :

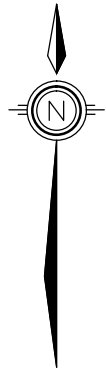
The earthworks must be carried out in accordance with AS 3798-2007 *Guidelines on earthworks for commercial and residential developments*. Supervision of bulk earthworks must be to Level 1 and the frequency of field density testing must be in accordance with Table 8.1 of AS 3798-2007.

IMPORTANT NOTE PRELIMINARY ISSUE

Note this plan is preliminary information of the proposed development works prior to the issue of all required Development Approvals by relevant authorities. This plan does not meet the requirements of a disclosure plan under the land sales act and and is unsuitable for use in any sales contract. In particular, no relevance should be placed on the information on this plan for any financial dealings involving the land.



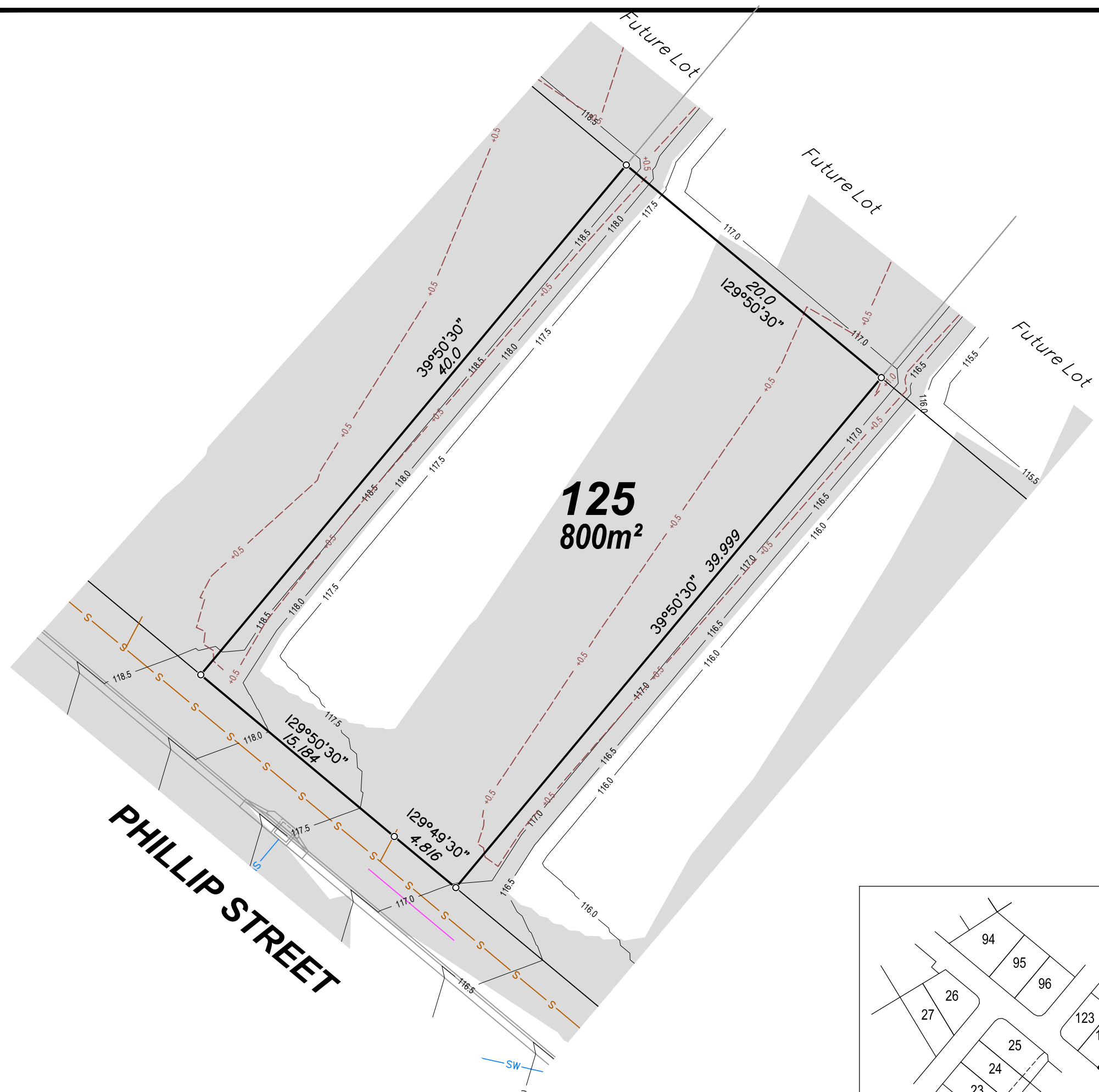
LOCALITY ARATULA	MAP REFERENCE 9442-33321
HEIGHT DATUM AHD D	LOCAL AUTHORITY SCENIC RIM REGIONAL COUNCIL
HEIGHT ORIGIN OPM162895	SCALE 1:250 (A3)
MERIDIAN MGA	SURVEYOR CH 25/04/2022
CONTOUR INTERVAL SEE NOTE	DRAWN RP 25/04/2022
PLAN NUMBER 1571-DIS-124	REVISION A




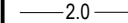
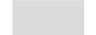


PLAN
FOR PROPOSED LOT 125

Proposed Lot **125** is currently described as part of Lot 10 on SP181081 and situated at Aratula.

The Reconfiguration of a Lot application for the proposed lot was approved on the _____ on plan 04-1571-101 rev C dated 25/10/2022.



Legend:

-  -1.0- Design Fill Depth Contour (0.1m Interval)
-  -2.0- Design Surface Level Contour (0.25m Interval)
-  Area of Design Fill
-  -sw- Design Drainage Infrastructure
-  -s- Design Sewer Infrastructure

Builders Note:

Builders shall not build off the design levels shown. A site survey is required. This note is an integral part of this plan.

Engineering Note :

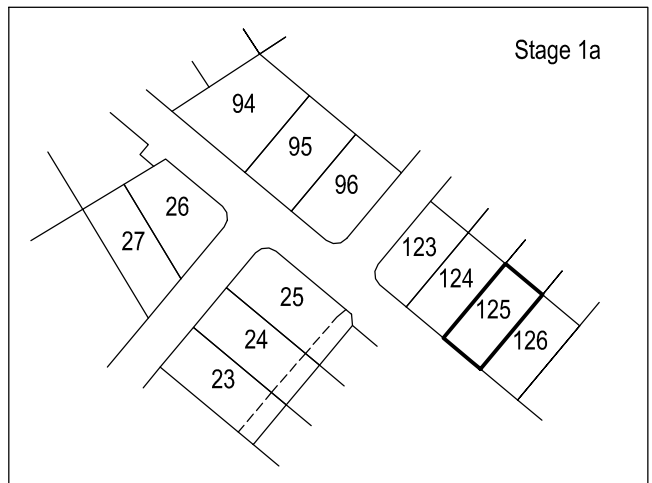
Engineering design information supplied by Mortons Urban Solutions Consulting Engineers, April 2022

- All design information is subject Operations Works Approval which has not been issued for the works at the time of preparation of this plan

Compaction Statement :

The earthworks must be carried out in accordance with AS 3798-2007 Guidelines on earthworks for commercial and residential developments. Supervision of bulk earthworks must be to Level 1 and the frequency of field density testing must be in accordance with Table 8.1 of AS 3798-2007.

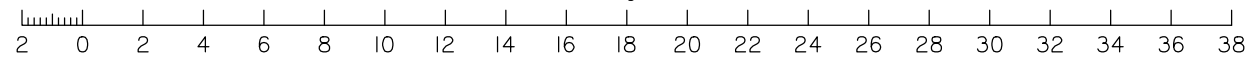
IMPORTANT NOTE PRELIMINARY ISSUE
Note this plan is preliminary information of the proposed development works prior to the issue of all required Development Approvals by relevant authorities.
This plan does not meet the requirements of a disclosure plan under the land sales act and and is unsuitable for use in any sales contract. In particular, no relevance should be placed on the information on this plan for any financial dealings involving the land.



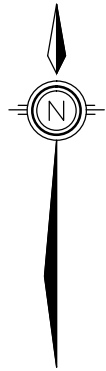
PHILLIP STREET

125
800m²

Scale 1: 250 – Lengths are in Metres.



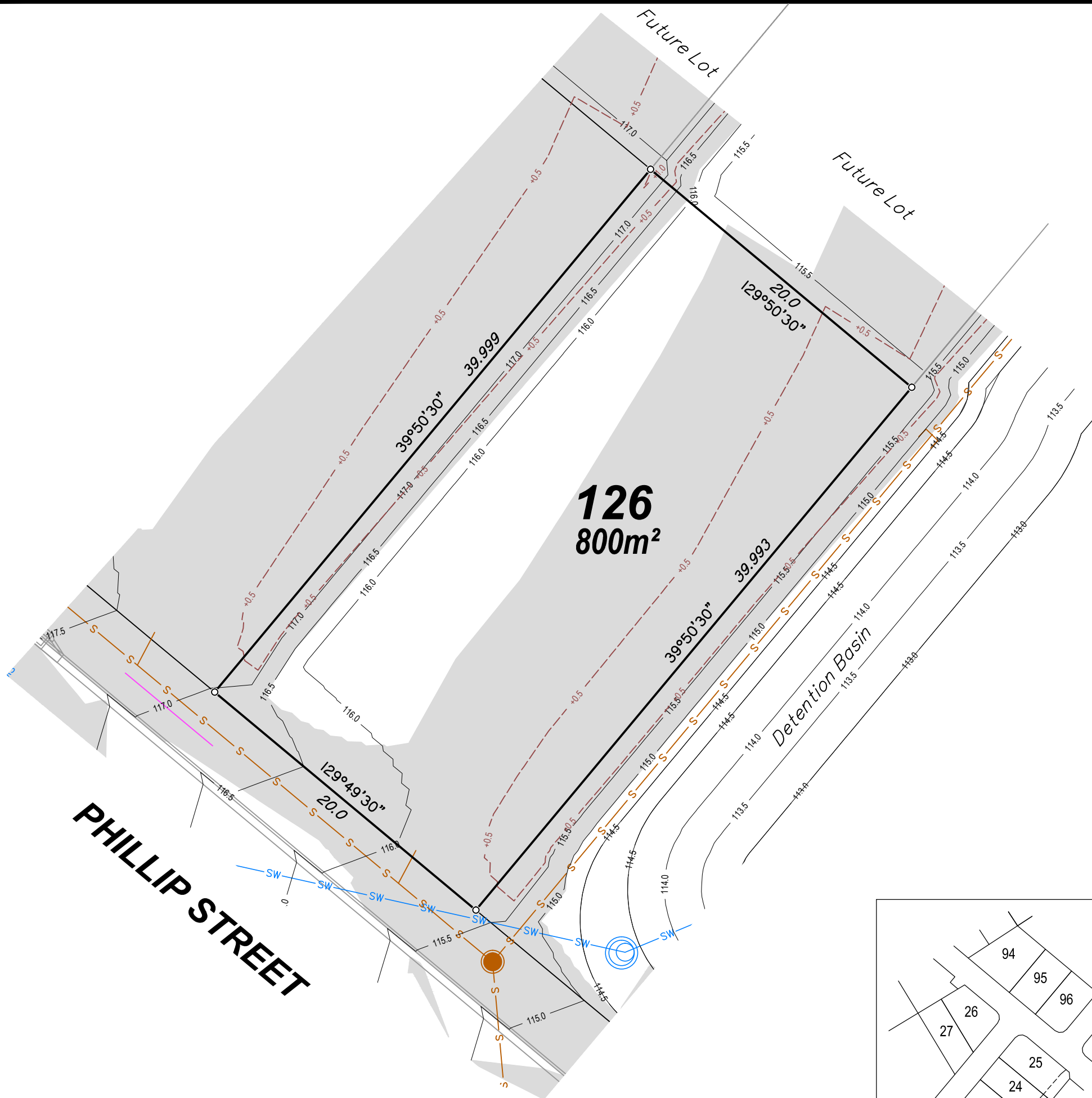
LOCALITY ARATULA	MAP REFERENCE 9442-33321
HEIGHT DATUM AHD D	LOCAL AUTHORITY SCENIC RIM REGIONAL COUNCIL
HEIGHT ORIGIN OPM162895	SCALE 1:250 (A3)
MERIDIAN MGA	SURVEYOR CH 25/04/2022
CONTOUR INTERVAL SEE NOTE	DRAWN RP 25/04/2022
PLAN NUMBER 1571-DIS-125	REVISION A





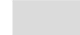


PLAN
FOR PROPOSED LOT 126

Proposed Lot **126** is currently described as part of Lot 10 on SP181081 and situated at Aratula.

The Reconfiguration of a Lot application for the proposed lot was approved on the _____ on plan 04-1571-101 rev C dated 25/10/2022.



Legend:

-  -1.0 - Design Fill Depth Contour (0.1m Interval)
-  -2.0 - Design Surface Level Contour (0.25m Interval)
-  Area of Design Fill
-  -sw - Design Drainage Infrastructure
-  -s - Design Sewer Infrastructure

Builders Note:

Builders shall not build off the design levels shown. A site survey is required. This note is an integral part of this plan.

Engineering Note :

Engineering design information supplied by Mortons Urban Solutions Consulting Engineers, April 2022

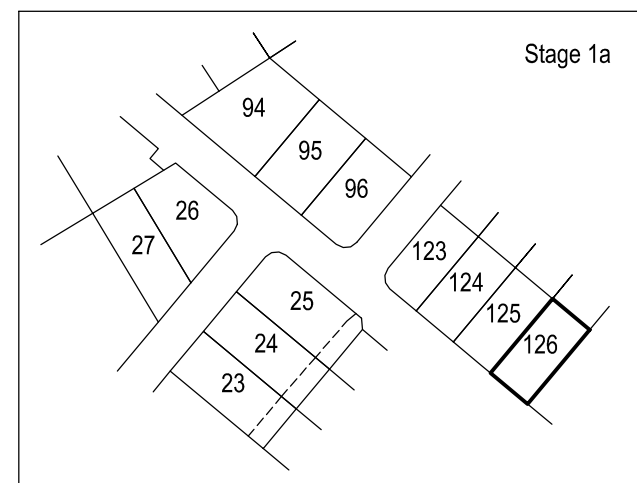
- All design information is subject Operations Works Approval which has not been issued for the works at the time of preparation of this plan

Compaction Statement :

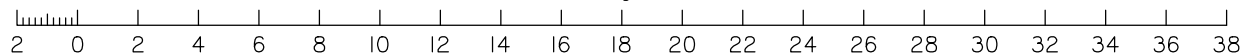
The earthworks must be carried out in accordance with AS 3798-2007 *Guidelines on earthworks for commercial and residential developments*. Supervision of bulk earthworks must be to Level 1 and the frequency of field density testing must be in accordance with Table 8.1 of AS 3798-2007.

IMPORTANT NOTE PRELIMINARY ISSUE

Note this plan is preliminary information of the proposed development works prior to the issue of all required Development Approvals by relevant authorities. This plan does not meet the requirements of a disclosure plan under the land sales act and and is unsuitable for use in any sales contract. In particular, no relevance should be placed on the information on this plan for any financial dealings involving the land.



Scale 1: 250 – Lengths are in Metres.



LOCALITY ARATULA	MAP REFERENCE 9442-33321
HEIGHT DATUM AHD D	LOCAL AUTHORITY SCENIC RIM REGIONAL COUNCIL
HEIGHT ORIGIN OPM162895	SCALE 1:250 (A3)
MERIDIAN MGA	SURVEYOR CH 25/04/2022
CONTOUR INTERVAL SEE NOTE	DRAWN RP 25/04/2022

PLAN NUMBER 1571-DIS-126	REVISION A
------------------------------------	----------------------